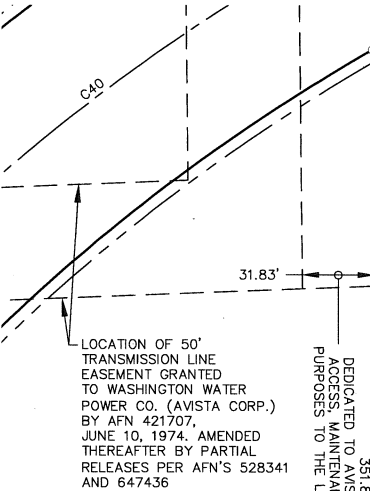


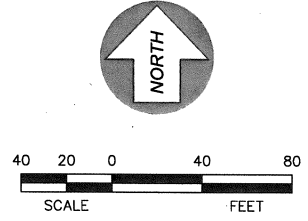
PULLMAN



3
SUNRISE PARK
 DEDICATED TO THE CITY OF PULLMAN
 A REGIONAL STORM WATER
 COLLECTION AREA AND CITY OF
 PULLMAN PARK
 59,658.90 sq.ft.

DEDICATED TO AVISTA CORPORATION FOR UTILITY PURPOSES,
 ACCESS, MAINTENANCE AND REPAIR AND FOR CONSERVATION
 PURPOSES TO THE LOT OWNERS OF LOTS 5 AND 7 OF BLOCK 1

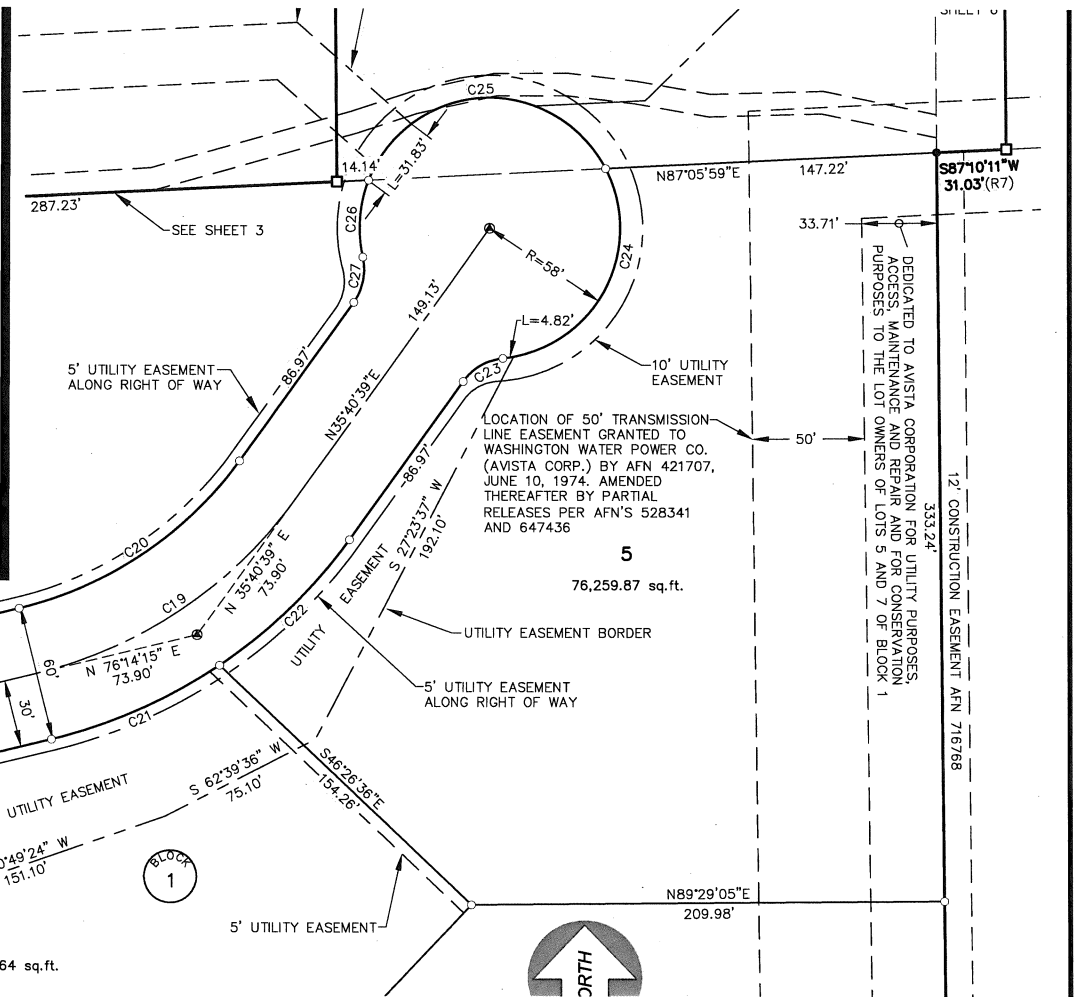
SEE SHEET 5



12' CONSTRUCTION
 EASEMENT
 AFN 716768

ASKINS PROPERTY

12' UTILITY
 EASEMENT
 AFN 716768



BLOCK 1

6
 56,333.64 sq.ft.

5
 76,259.87 sq.ft.

DEDICATED TO AVISTA CORPORATION FOR UTILITY PURPOSES,
 ACCESS, MAINTENANCE AND REPAIR AND FOR CONSERVATION
 PURPOSES TO THE LOT OWNERS OF LOTS 5 AND 7 OF BLOCK 1

12' CONSTRUCTION EASEMENT AFN 716768

S87°10'11\"/>

