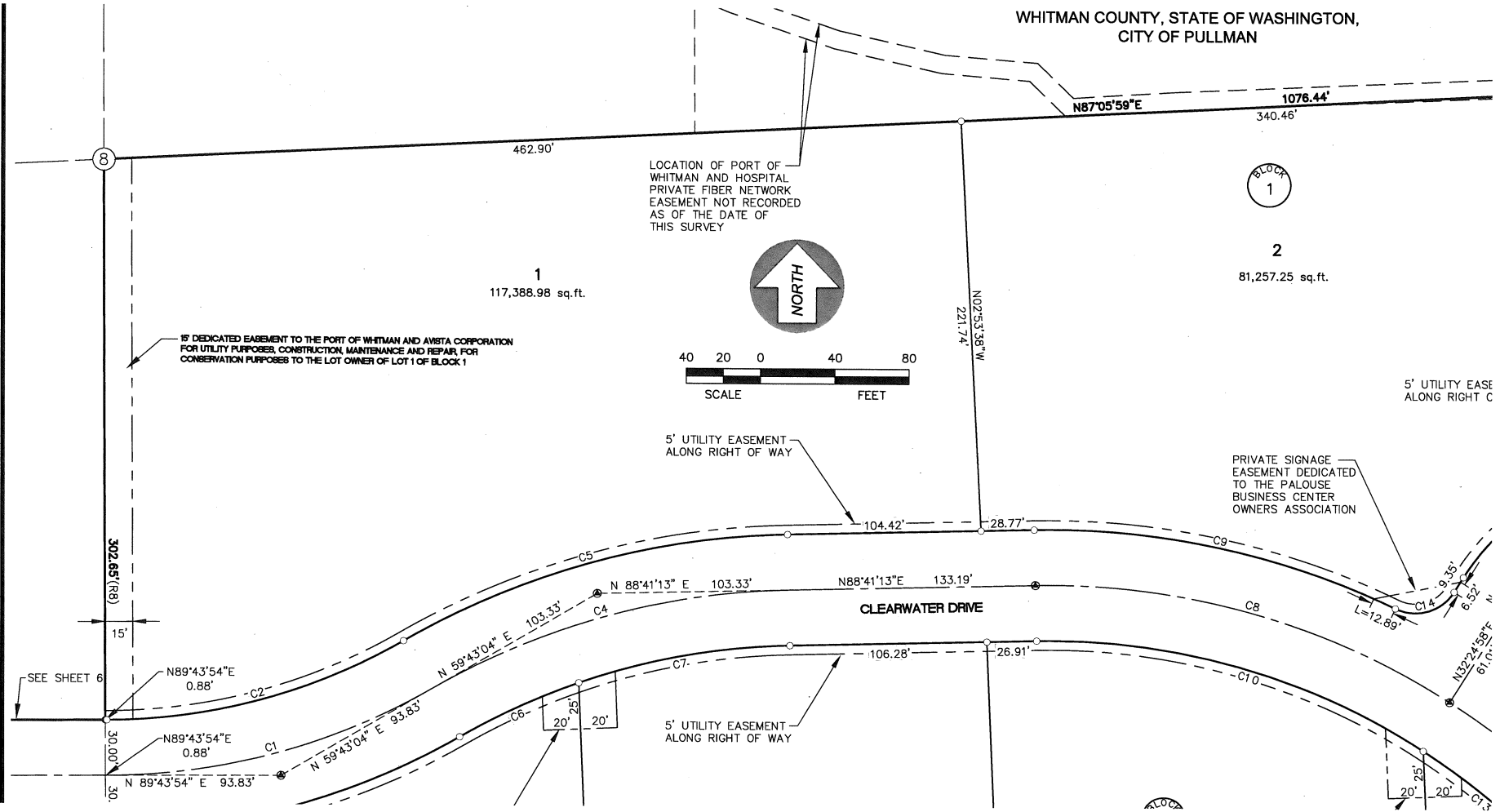
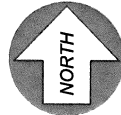


WHITMAN COUNTY, STATE OF WASHINGTON,
CITY OF PULLMAN



LOCATION OF PORT OF
WHITMAN AND HOSPITAL
PRIVATE FIBER NETWORK
EASEMENT NOT RECORDED
AS OF THE DATE OF
THIS SURVEY



15' DEDICATED EASEMENT TO THE PORT OF WHITMAN AND AVISTA CORPORATION
FOR UTILITY PURPOSES, CONSTRUCTION, MAINTENANCE AND REPAIR, FOR
CONSERVATION PURPOSES TO THE LOT OWNER OF LOT 1 OF BLOCK 1

5' UTILITY EASEMENT
ALONG RIGHT OF WAY

PRIVATE SIGNAGE
EASEMENT DEDICATED
TO THE PALOUSE
BUSINESS CENTER
OWNERS ASSOCIATION

5' UTILITY EASE
ALONG RIGHT C

SEE SHEET 6

N 89°43'54" E
0.88'

N 89°43'54" E
0.88'

N 89°43'54" E 93.83'

N 59°43'04" E 103.33'

N 59°43'04" E 93.83'

5' UTILITY EASEMENT
ALONG RIGHT OF WAY

CLEARWATER DRIVE

N 88°41'13" E 103.33'

N 88°41'13" E 133.19'

N 88°41'13" E 106.28'

N 88°41'13" E 26.91'

L=12.89'

N 32°24'59" E
61.0'

20' 25'
20'